

SmartServices™

NEW FEATURES



We're always improving and adding features to SmartServices. If there's an improvement or feature you'd like to see on the Dashboard, please let us know by emailing info@conairgroup.com.

NOW INTRODUCING: RESIN REPORTS!

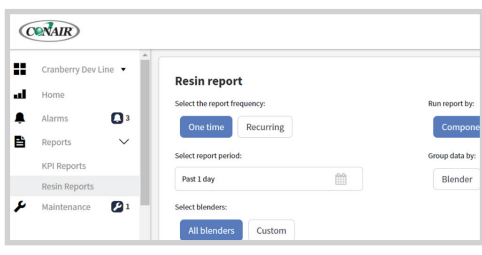
Resin isn't cheap. You want to know how much you're using. You want to be able to calculate material cost per project/product, so that you can accurately determine pricing for your customers. For a number of years, there have been some ways to track resin use, and export that into a report. But these methods are often complicated, sometimes requiring additional hardware (server space) and maintenance. The new optional Resin Report Feature of SmartServices takes all the complexity away. There's no need for an additional server attached to your equipment. The optional Resin Report in SmartServices provides nicely formatted tables, with material usage by machine, material, shift, etc. Customers currently using this feature have stated they love the useful reports.

HOW IT WORKS

These reports support breakdowns by machine, shift, resin and component. The Resin Report Function allows for scheduled reporting (emailed to you at your desired intervals). There is also an "instant" report option, where clicking a button will send you a report immediately.

To create a Resin Report

1. Choose "Resin Reports" from the drop down arrow beside Reports in the left navigation column of the SmartServices Dashboard. *Screenshot 1a* shows these steps.
2. Select the report frequency (one-time or recurring).
3. Select the report period. Clicking the calendar lets you choose a date range.
4. Select if you would like to run the report for all blenders, or a specific blender.
5. Choose to run the report by component or material.
6. Group the data by blender or shift.
7. Press "Download Report" to see the report immediately (*Screenshot 1b*). Pressing "Save Report" will schedule future reports at the intervals you selected.



Screenshot 1a

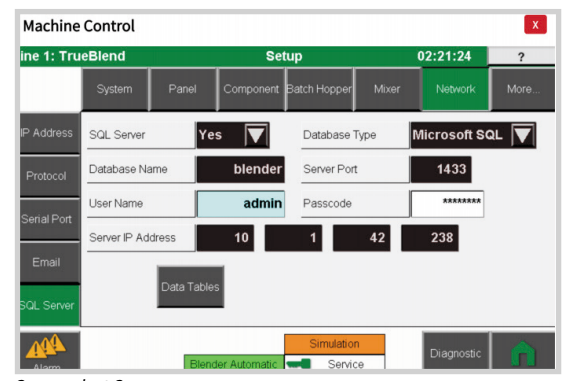
Screenshot 1b. below is an example report.

Blender	Shift	Component	Weight
Line 4	Shift1	Component 1	126.78
		Component 2	40.86
		Component 3	31.89
		Component 4	10.65
		Component 5	0.00
		Component 6	0.00
		Total	210.18
Total			210.18

To enable resin reporting at the blender:

From the TrueBlend HMI, or using Machine Control from SmartServices, you can enable the resin reporting feature at your TrueBlend blender.

1. On the blender touchscreen, log in at the Admin user level.
2. Navigate to the Setup screen.
3. Choose the "Network" tab.
4. Choose the SQL Server section. (*Screenshot 2a*)
5. Conair supports the MSSQL db. Choose this as the database type.
6. Choose "Yes" for the SQL Server. *Contact Conair Customer Care for this blender license.*
7. Ensure the Database Name and Server Port are as shown.
8. Ensure the User Name is admin and the Pass Code is xmg2mwm.
9. Enter the Server IP Address. Which is the same as the HUB's machine network.
10. Tap Data Tables and set Inventory to Yes, and all other choices to No.



Screenshot 2a

NOTE: Resin Reporting Feature requires software version shown below or newer:
 TrueBlend SB2 with PP065 v2.14.8
 TrueBlend SB3 with C70 v3.14.6
 TrueBlend SB4 with C30 v4.14.6