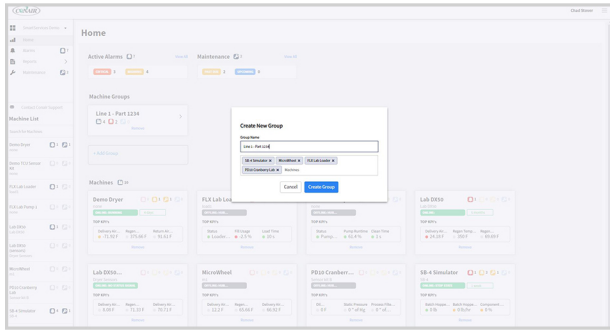


SmartServices™

NEW FEATURES

We're always improving and adding features to SmartServices. If there's an improvement or feature you'd like to see on the Dashboard, please let us know by emailing info@conairgroup.com.

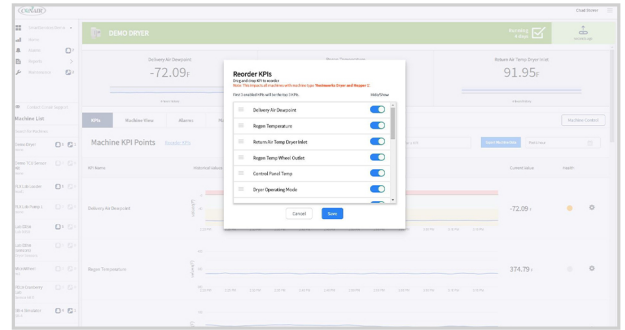


NOW INTRODUCING: GROUPS!

Some processors like to group their equipment based on lines, equipment type (such as all dryers together), cells, or other segments. The new Groups feature of the SmartServices Dashboard gives operators the capability of creating groups of equipment based on their needs. Groups help to avoid unnecessary time spent hunting for machine data, and creating them is simple.

HOW IT WORKS

1. Click the + **Add Group** button on the SmartServices Home page.
2. Create a name for the group and select which machines you would like to include.
3. Click **Create Group** once you are done.
4. You will now be able to view this new group on your home page and click it.



KPI ORGANIZATION: THE WAY YOU WANT IT.

Different plants have different needs, so don't get stuck monitoring equipment KPI's that don't matter to you. In the SmartServices Dashboard, you can now customize your KPI organization. With improved organization, you'll be better enabled to meet your continuous improvement goals, selecting which KPI's to show for each machine, moving critical KPI's to the top of the list, and hiding less important KPI's. Prioritizing your data view eliminates searching, increasing your uptime.

HOW IT WORKS

1. Choose a piece of equipment from the dashboard.
2. Click on **Reorder KPIs**.
3. Scroll through the list, and choose which KPI you'd like to hide or show.
4. You can change the order of your list by clicking and dragging the KPI up and down.
5. Click **Save** when you are done.
6. Your top 3 KPI's will always appear at the top of the page, the others will show below.