

General Purpose High Volume Size Reduction

Bulk plastic scrap is quickly size-reduced with the economical General Purpose (GP) Series Shredders from Conair. Designed specifically for quickly cutting through plastic scrap, the GP Series readily accepts loose scrap, bundles, and even gaylord quantities of plastic materials dumped into its reinforced surge hopper. Scrap flows efficiently by an automatic ram feed into rotating rows of rugged knives, welded into machined pockets of the solid steel rotor.



GP Model 1032

Economical Plastic Scrap Shredding

The GP Series is the solution for processes that need to grind plastic scrap in higher volumes than granulators can manage.

The dagger-cut knives offer four cutting edges that can be renewed by simply unbolting and indexing each four-edged knife to reveal a fresh cutting edge. Each knife slices against adjustable, notched bed knives for fast, efficient, primary size reduction.

Final particle size is created by forcing the flow of shredded material through a broad choice of reinforced screens. Screens are provided in hole sizes from a coarse 3 inch {72 mm} down to fine 3/4 inch {19 mm} diameter, often minimizing the need for secondary granulation.

▶ Long life, high impact rotor takes the abuse

The 10 inch {254 mm} diameter, solid steel rotor is 4140 high alloy steel, heat treated for high tensile strength and a lifetime limited warranty. Oversized end bearings assure proper alignment and long life.

▶ Extra long service from indexable blades

Each dagger-cut knife penetrates and efficiently cuts through plastic scrap and can be easily indexed to employ a fresh tip. Each knife provides four cutting edges.

▶ Minimal maintenance rotor seals

Self-cleaning, non-contaminating rotor seals provide continuous operation, even with dusty scrap.

▶ Optional, Controlled shredding that requires no monitoring

Automatic rotor and ram control is provided via a PLC control in a choice of touch screen interfaces. All models include an auto-reverse rotor shaft, to quickly and automatically recover from rotor jams.

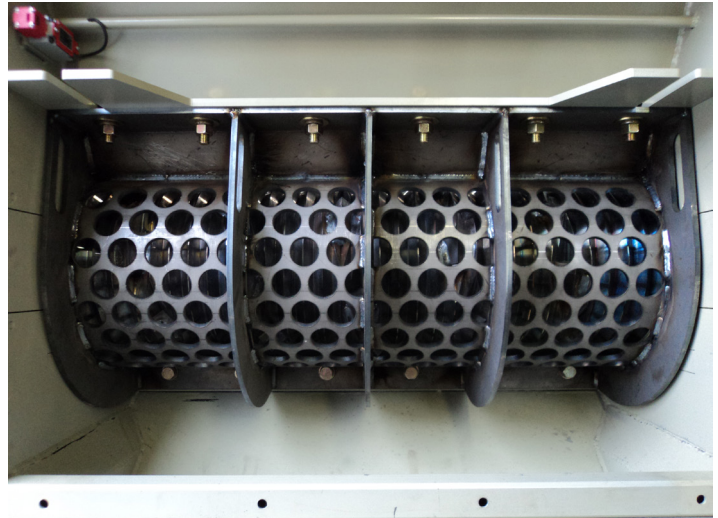
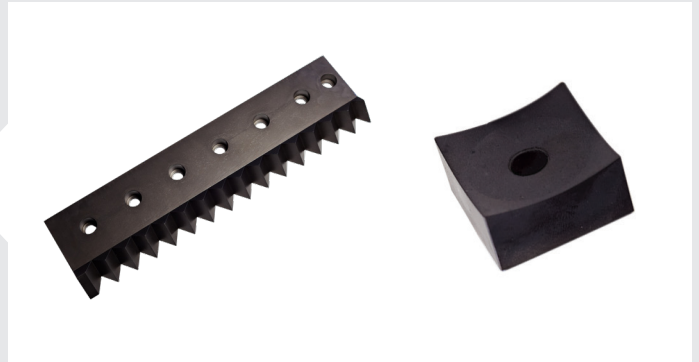


Features

- **Solid steel, single-piece forged rotors** maximize durability and strength
- **Self-cleaning, non-contaminating rotor seals** protect bearings from material contamination for longer bearing life
- **Ultra-duty gear boxes** are directly coupled to regulate torque and rotor speed in rugged shredding applications
- **Oversized spherical bearings** limit drift and handle heavy duty applications
- **Auto-reverse rotor operation** quickly recovers in the event of jams
- **Indexable dagger cutting system (4-way)** requires no sharpening and little maintenance to keep cutting efficient
- **Straight-walls hopper** minimize the chance of materials bridging or compacting
- **High efficiency ram and hydraulic system** maximizes throughput and efficiency with patented controls and high speed dual pump hydraulics package. (3 to 5 Hp {2.2 to 3.7 kW} standard)
- **Service access doors** (with removable rear compartment) provide easy access for maintenance
- **Heavy duty construction cutting chamber** maximizes dimensional stability to ensure precision, strength, and durability
- **Over-torque limiting clutch** provides automatic shutdown to prevent damage in the event of prolonged clutch slippage *(Standard in 40 and 50 Hp {30 and 37 kW} models, optional in other models)*

Dagger-Cut Blades

The dagger-cut blade is used for granulating hard plastic with minimal strain to the blade or the rotor. Four cutting surfaces are available on each dagger-cut blade, indexable with only a wrench. Each blade holder is welded into the surface of the machined rotor surface for superior reinforcement.



Spring screens are available from 3/4 to 3 inches and are easily maintained via twin access doors.

Options

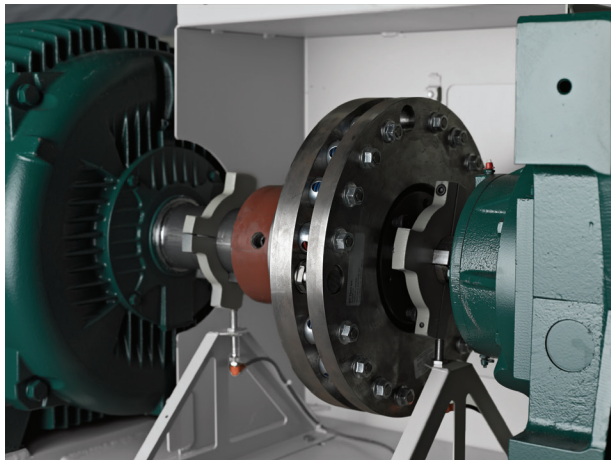
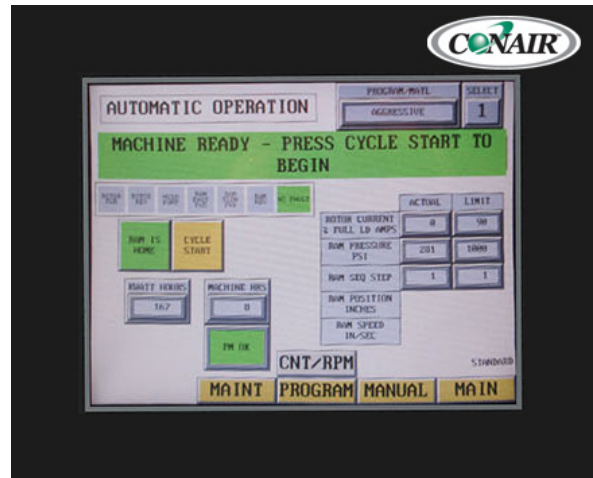
- **Take-away conveyors**
- **Elevating legs**
- **Custom feed hoppers**
- **Evacuation blower/vacuum system**
- **Interlocking controls** for both feed and take-away conveyors
- **Auto-shred control system**
- **Over-torque limiting clutch assembly**
- **High-powered rotor motors** available from 20 to 50 Hp {15 to 37 kW}
- **Hydraulic ram motors** available as 3 Hp or 5 Hp {2.2 or 3.7 kW}
- **Variety of screen hole sizes** available from 3/8 to 3 inches {10 to 76 mm} - triple-cut small sizes can use water cooling to reduce size efficiently, eliminating the need for secondary granulation

Auto-Shred Operation Option

With Conair's Auto-Shred control option, fully automatic operation is provided for true "load it and forget it" operation. Up to six fully auto-matic control programs may be easily initiated via the full color touch screen.

Once started, Auto-Shred guides forward motion of the ram for smooth, highly efficient shredding with minimal rotor drive spikes. In the event of a jam, Auto-Shred automatically reverses the rotor to reduce damage.

In addition, Auto-Shred provides fast return-to-home position of the ram for fast recovery and restart of shredding.



Over-Torque Limiting Clutch Assembly

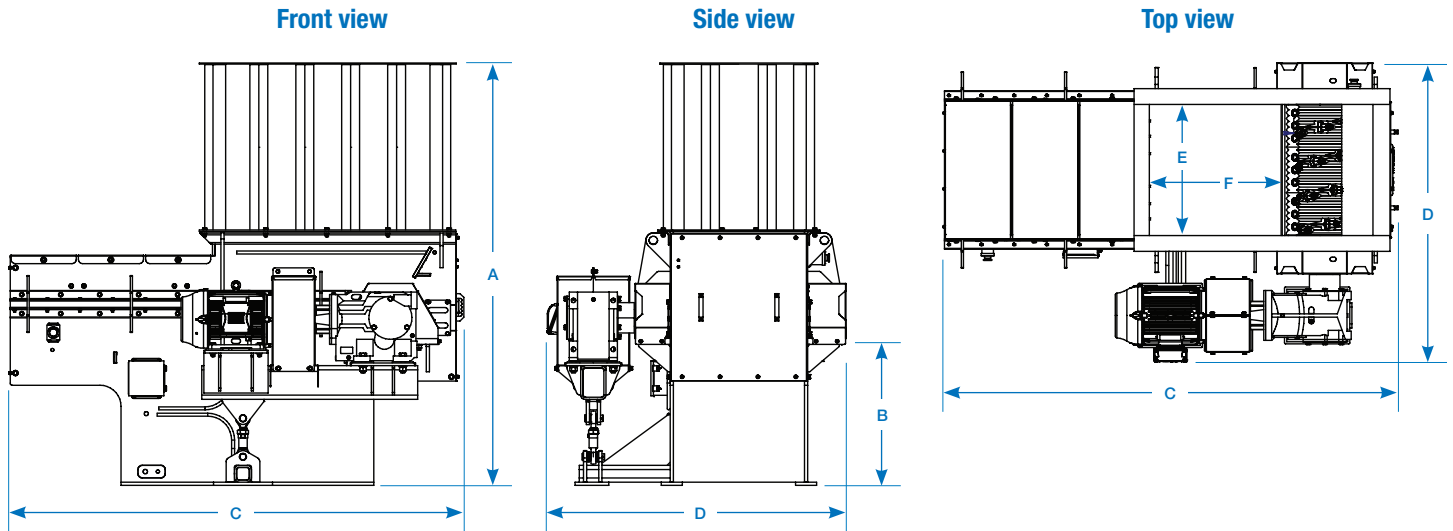
This option stops the rotor when it detects impassable contaminants such as steel or thick aluminum, to pre-vent undue stress to the rotor.

The mechanical clutch is designed to monitor both instantaneous and gradual clutch slippage. It slips automatically when limits of the gearbox are breached for powerful rotor and drive train protection.

Comes with a simple PLC push button reset or a touch screen non-mechanical reset.

(Special assembly comes standard with 40 and 50 Hp {30 and 37 kW} models, optional on other models.)

Specifications



Models	GP 1032	GP 1042
Performance characteristics		
Cutting chamber opening inches {mm}	32 x 45 {813 x 1143}	42 x 45 {1067 x 1143}
Rotor speed rpm	109 - 130	
Rotor diameter inches {mm}	10 {254}	
Rotor width inches {mm}	32 {813}	42 {1067}
Motor range Hp {kW}	20, 30, 40 {15, 22, 30}	30, 40, 50 {22, 30, 37}
Ram height inches {mm}	7 {178}	
Ram hydraulic motor Hp {kW}	3.0, 5.0 {2.2, 3.7}	
Standard Screen hole diameter inches {mm}	1.5, 2, 2.5, 3 {38, 51, 64, 76}	
Optional Screen hole diameter inches {mm}	3/8, 1/2, 5/8, 3/4, 1, 1 1/4 {10, 13, 16, 19, 25, 32}	
Screen type	round holes	
Number of dagger cutters / rows	22 cutters/1 row	30 cutters/1 row
Dimensions inches {mm}		
A - Overall height (to infeed)	78.3 {1989}	
B - Height of discharge	21.8 {554}	
C - Total length	97.8 {2484}	
D - Total width	70.7 {1796}	81.7 {2075}
E - Feed hopper opening width	31.1 {790}	42.1 {1069}
F - Feed hopper opening length	44.5 {1130}	
Ram stroke distance	34 {863}	
Installed weight lb {kg}	8000 {3629}	9000 {4082}
Voltages Full load amps		
460 V/3 phase/60 hz	Consult Conair	
Specification Notes		
Consult factory for throughput specifications.		
Specifications may change without notice. Consult with a Conair representative for the most current information.		

