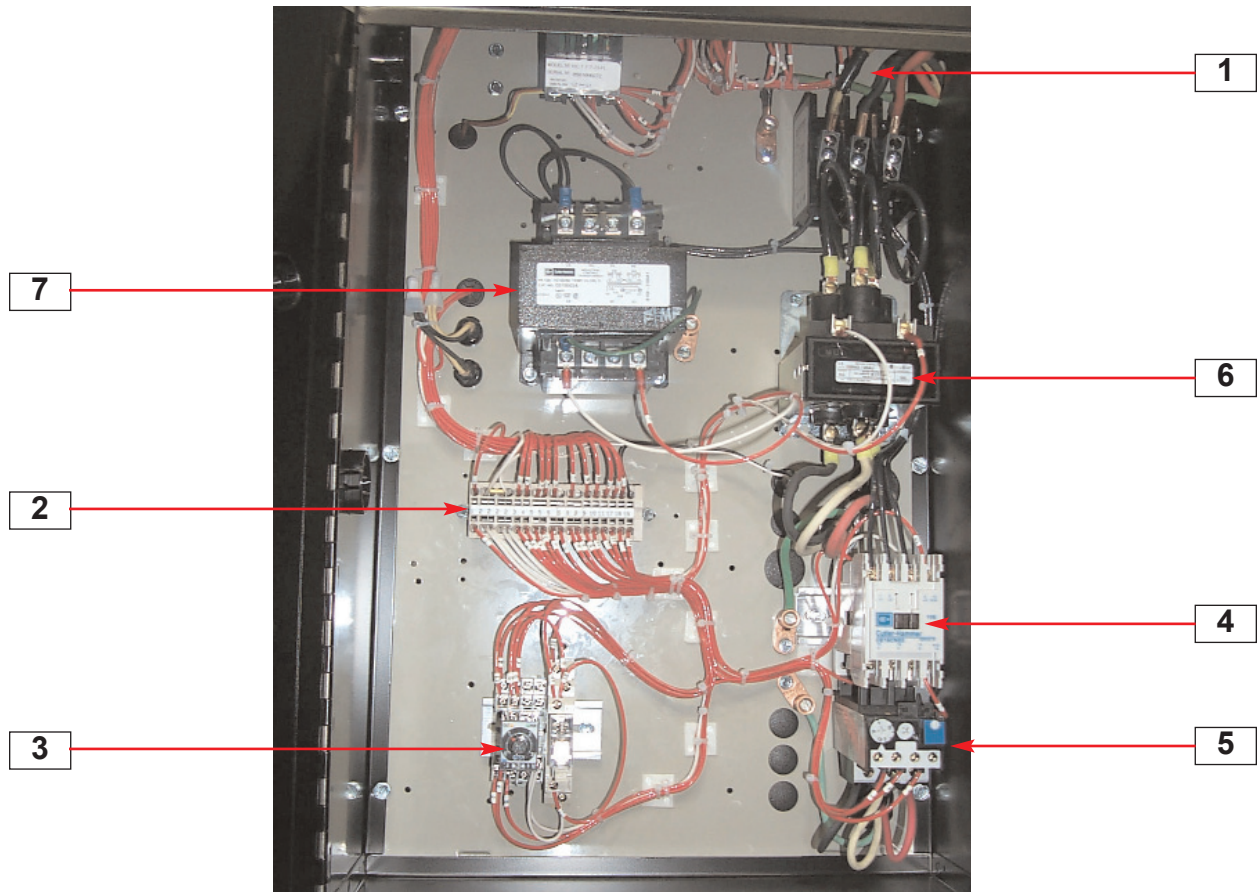


Parts Identification Guide
PIH005/0205

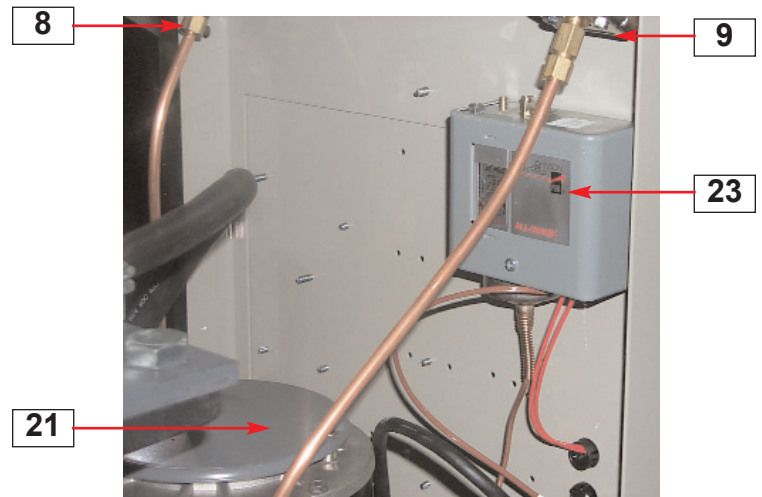
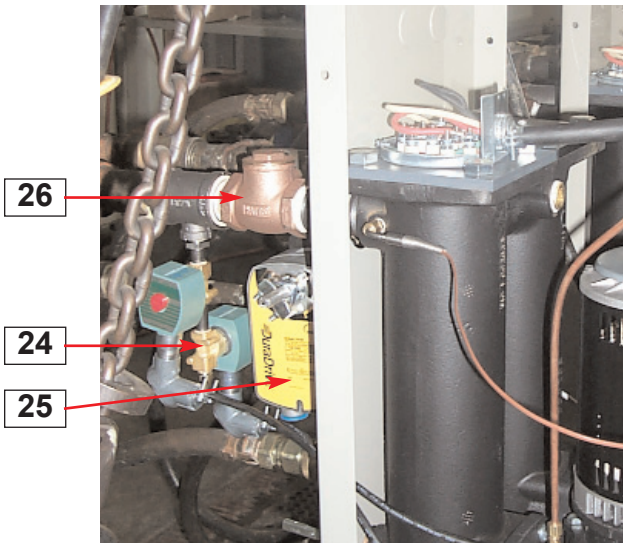
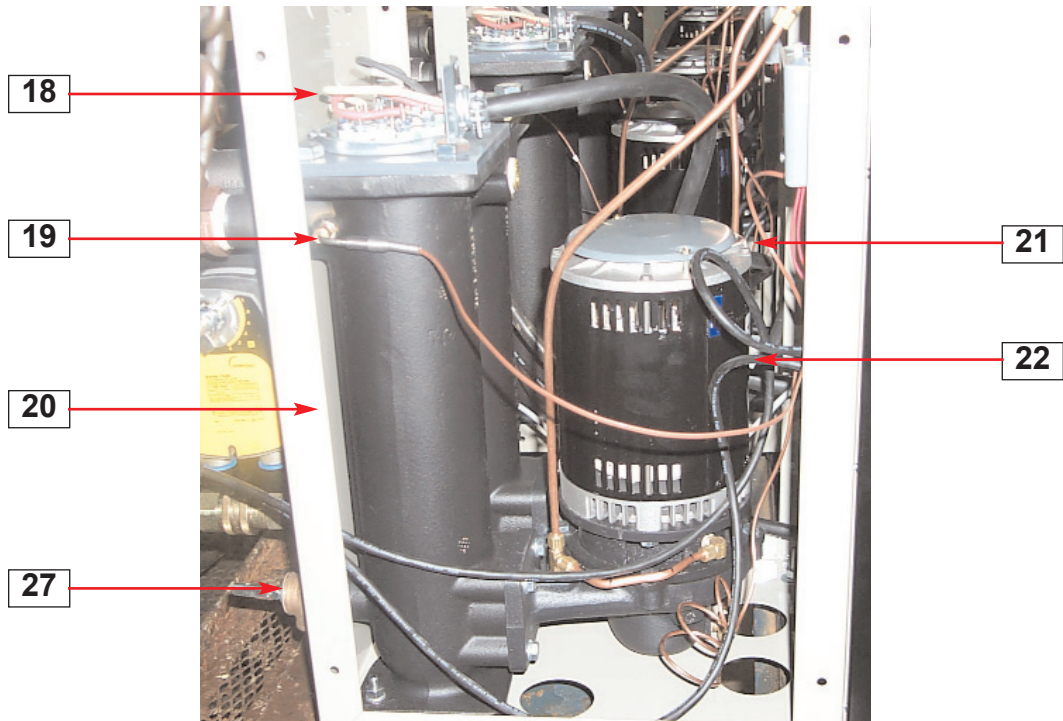
TW Thermolators





TW

- | | |
|--------------------------------|---------------------------|
| 1. Main Terminal Block | 10. Graphic Overlay - TW |
| 2. Terminal Block Control | 11. TW Controller |
| 3. 1TD Start Timer | 12. On / Off Switch - LED |
| 4. Pump Contactor | 13. Purge Switch |
| 5. Pump Overload | 14. Sonalert Alarm |
| 6. Mercury Contactor - Heater | 15. Stop Switch |
| 7. Transformer | 16. Fault Reset - LED |
| 8. From Process Pressure Gauge | 17. Start Switch |
| 9. To Process Pressure Gauge | |



TW

- 8. From Process Pressure Gauge
- 9. To Process Pressure Gauge
- 18. Heater
- 19. To Process Thermocouple
- 20. Heater Tank
- 21. Motor Drip Cover

- 22. Pump Motor
- 23. Low Pressure Switch
- 24. Mold Purge Solenoid Valves
- 25. Cooling Valve Actuator
- 26. To Process Check Valve
- 27. Pressure Relief Valve