

Horizontal Feed Tubes (continued)

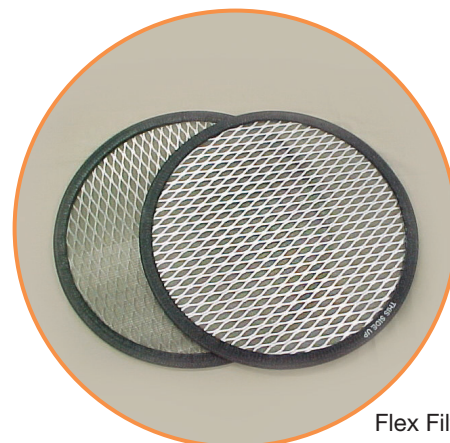
Part Number	OD	Material
10619802	2-1/4"	Aluminum
106199	2-1/2"	Carbon Steel
10619901	2-1/2"	Stainless Steel
10619902	2-1/2"	Aluminum
106200	3"	Carbon Steel
10620001	3"	Stainless Steel
10620002	3"	Aluminum
10629702	4"	Aluminum
10629701	4"	Stainless Steel

Flex Filters (1981 to present)

Loader Size	Filter OD	Dacron	10 Mesh Stainless Steel	20 Mesh Stainless Steel	100 Mesh Stainless Steel	200 Mesh Stainless Steel	389.6 Mesh Nylon†
8"	8-1/4"	10133805	10149302	10133702*	10141502	10146302	10142101
8"	9-3/4"	10133806	10149306	10133706*	10141506	10146306	10142106
12"	14"	10133801	10149301	10133701	10141501	10146301	10142102
15"	17"	10133802	10149303	10133703	10141503	10146303	10142103
20"	22"	10133803	10149304	10133704	10141504	10146304	10142104
25"	27"	10133804	10149305	10133705	10141505	10146305	10142105

Note: *All filters with expanded metal backing except where noted with an asterisk.

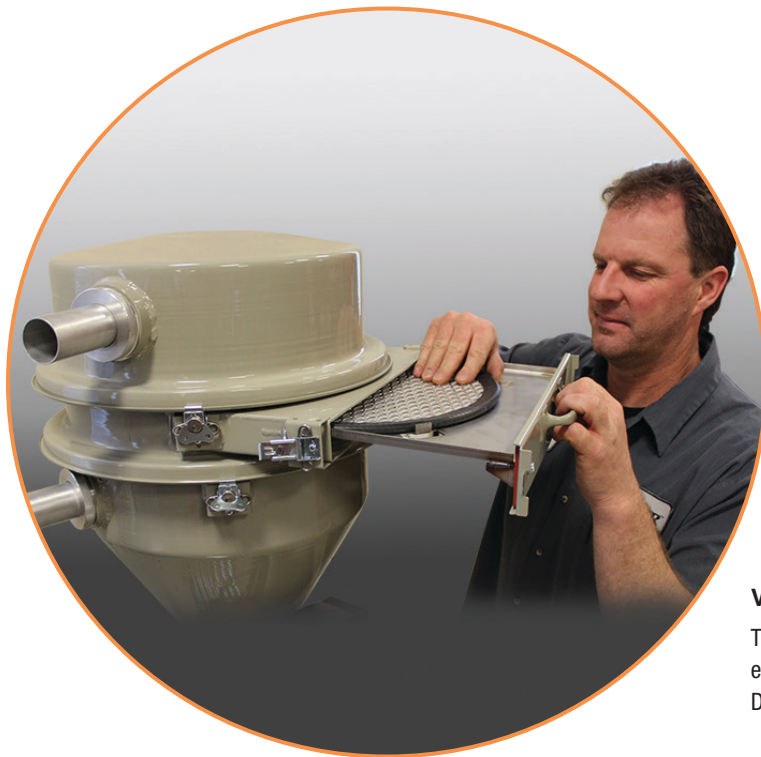
†389.6 Mesh Nylon - with 20 mesh Stainless Steel center layer.



Flex Filters

Filter Drawer

Filter Drawers	For Model	Construction	Filter used in Base Loader	Filter used in Filter Drawer 20 Mesh Stainless Steel
1006160101	DL12	Carbon	10133701, 14" Diameter	10133711, 9.75" Diameter
1006160102	DL12	Stainless	10133701, 14" Diameter	10133711, 9.75" Diameter
1006160201	DL15	Carbon	10133703, 17" Diameter	10133710, 14" Diameter
1006160202	DL15	Stainless	10133703, 17" Diameter	10133710, 14" Diameter
1006160301	DL20	Carbon	10133704, 22" Diameter	10133707, 17" Diameter
1006160302	DL20	Stainless	10133704, 22" Diameter	10133707, 17" Diameter
1006160401	DL25	Carbon	10133705, 27" Diameter	10133708, 22" Diameter
1006160402	DL25	Stainless	10133705, 27" Diameter	10133708, 22" Diameter



Vacuum Receiver Screen Access Made Easy

The easy clean Filter Drawer installs quickly with no tools and permits safer, easier access to the screen filters of Conair DuraLoad vacuum receivers.

Filters for Z Loaders

Part Number	Description	OD
101667	White Vyon Felt	6-3/4"
101767	389 Mesh Nylon	6-3/4"
101776	Dacron Felt	6-3/4"

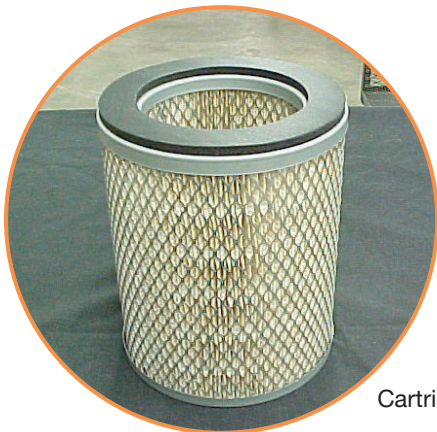


Cartridge Filters

Part Number	OD	ID	Length	Description
29901701	6-1/16"	4-1/2"	3-7/8"	Open both ends.
29901702	9-3/4"	5-1/8"	14-1/8"	3/8" ID Grommet-top end-open at bottom with 3/8" x 7-11/16" OD x 5-1/2" ID gasket.
29901703	10-1/8"	8-3/8"	2-1/4"	Open both ends.
29901704	7-15/16"	3-9/16"	12-1/4"	1/2" diameter hole one end, 1/4" thick gasket open end.
29901705	6-11/16"	4-3/16"	7-7/8"	Open one end, 3/16" ID grommet other end, w/G98AF (1/4" x 6-1/2" OD x 4-1/2" ID) gasket open end.
29901706	9-3/16"	4-13/16"	10-3/8"	1/2" diameter hole one end, 3/8" thick rubber gasket on open end.

Cartridge Filters (continued)

Part Number	OD	ID	Length	Description
29901707	6"	3-7/32"	4"	Open one end, 1/4" ID grommet other end with 3/16" x 5-1/8" OD x 3-1/2" ID gasket.
29901708	8-1/4"	6-3/8"	2-3/4"	Open both ends, 3/8" thick gasket both ends.
29901709	13-27/32"	9-15/32"	18-3/8"	Open one end with 3/8" thick rubber gasket 7/8" diameter hole one end.
29901710	8-1/16"	6-1/2"	2-1/8"	Open both ends, 3/8" thick gasket both ends.
29901711	12-1/16"	7-11/16"	14-7/16"	1/2" diameter hole one end, open one end 3/8" thick gasket on opened end.
29901712	3-1/2"	2-1/16"	4-1/4"	Open both ends, screens inside & out, round plastisol seals both ends.
29901713	13-27/32"	9-1/2"	14-3/8"	1/2" diameter hole on end, with 3/8" thick gasket on open end.
29901714	14-23/32"	10-5/16"	24-9/16"	Open one end, 29/32" diameter hole on one end, gasket on open end.
29901715	3"	1-5/8"	1-3/8"	Open both ends.
29901716	5-9/16"	3-5/32"	14-1/4"	Open one end.
29901717	8-27/32"	5"	4-9/16"	Open one end, 7/16" diameter hole one end with 3/8" W x 1/2" H x 7-1/4" OD x 6-1/2" ID gasket.
29901718	7-7/8"	4-3/4"	9-5/8"	Open one end. 22.8 sq. ft. filter area.
29901719	4"	N/A	1-3/8"	"Hockey Puck" Style filter, 1.1 sq. ft. filter area.
29901720	5-7/8"	3-1/2"	8-3/4"	Open both ends. 14 sq. ft. filter area.
29901721	9-3/4"	6"	9-5/8"	Open one end. 36.5 sq. ft. filter area.
29901722	11-3/4"	8"	9-5/8"	Open one end. 45.4 sq. ft. filter area.
29901723	19-5/8"	14"	14-1/2"	Open one end. 140 sq. ft. filter area.



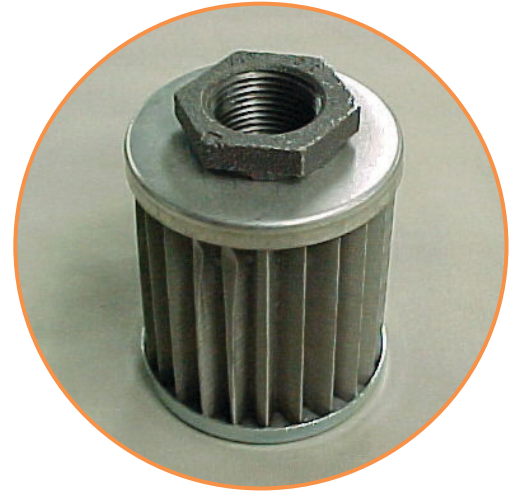
Cartridge Filters

High Temperature Cartridge Filters

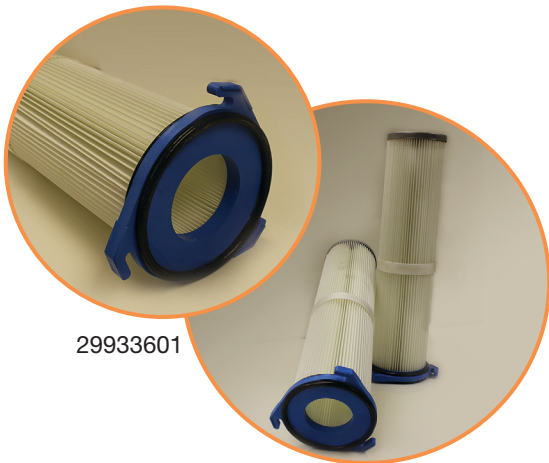
Part Number	OD	ID	Length	Description
26704701	6-1/16"	4-1/2"	3-7/8"	Open both ends.
26704702	9-3/4"	5-1/8"	14-1/8"	3/8" ID Grommet-top end-open at bottom with 3/8" x 7-11/16" OD x 5-1/2" ID gasket.
26704703	10-1/8"	8-3/8"	2-1/4"	Open both ends.
26704704	7-15/16"	3-9/16"	12-1/4"	1/2" diameter hole one end, 1/4" thick gasket open end.
26704705	6-11/16"	4-3/16"	7-7/8"	Open one end, 3/16" ID grommet other end, w/G98AF (1/4" x 6-1/2" OD x 4-1/2" ID) gasket open end.
26704706	9-3/16"	4-13/16"	10-3/8"	1/2" diameter hole one end, 3/8" thick rubber gasket on open end.
26704707	6"	3-7/32"	4"	Open one end, 1/4" ID grommet other end with 3/16" x 5-1/8" OD x 3-1/2" ID Gasket.
26704708	8-1/4"	6-3/8"	2-3/4"	Open both ends, 3/8" thick gaskets at both ends.
26704709	13-27/32"	9-15/32"	18-3/8"	Open one end with 3/8" thick rubber gasket. 7/8" diameter hole one end.
26704710	8-1/16"	6-1/2"	2-1/8"	Open both ends, 3/8" thick gaskets both ends.
26704711	12-1/16"	7-11/16"	14-7/16"	1/2" diameter hole one end, open on one end. 3/8" thick gasket on open end.
26704712	3-1/2"	2-1/16"	4-1/4"	Open both ends, screens inside and out, round plastisol seals both ends.
26704713	13-27/32"	9-1/2"	14-3/8"	1/2" diameter hole one end with 3/8" thick gasket on open end.
26704714	14-23/32"	10-5/16"	24-9/16"	Open one end. 29/32" diameter hole one end. Gasket on open end.
26704715	3"	1-5/8"	1-3/8"	Open both ends.
26704716	5-9/16"	3-5/32"	14-1/4"	Closed one end.
26704717	8-27/32"	5"	4-9/16"	Open one end. 7/16" diameter hole one end with 3/8" W x 1/2" H x 7-1/4" OD x 5-1/2" ID gasket.
26704718	7-7/8"	4-3/4"	9-5/8"	Open one end, 22.8 sq. ft. filter area.
26704719	4"	N/A	1-3/8"	"Hockey Puck" style filter, 1.1 sq. ft. filter area.
26704720	5-7/8"	3-1/2"	8-3/4"	Open both ends. 14" sq. ft. filter area.
26704721	9-3/4"	6"	9-5/8"	Open one end. 35.3" sq. ft. filter area.
26704722	11-3/4"	8"	9-5/8"	Open one end. 45.4" sq. ft. filter area.
26704723	22"	15-5/8"	24-3/4"	140" sq. ft. filter area. Open one end. Silicone gasket. 1/2" sq. ft with 19-1/4" OD.
26704724	11-1/2"	8"	14-1/2"	51 sq. ft. area; Polyurethane potting compound with silicone gaskets. 1/2" sq. ft. SOE with 1/2" bolt hole.
26704725	12-3/4"	8-3/8"	14-1/2"	55 sq. ft. area; 10 oz. pleatable PPS; Red silicone gasket. 1/2" x 1/2" x 10-1/4" ID; Permeability: 20 CFM/FT2 @ 0.6" W.G.

Air Intake Filters

Part Number	Pipe Size	Length	OD
29919301	3/4" FPT	4-3/32"	2-13/16"
29919302	1" FPT	5-11/32"	3-3/16"
29919303	1-1/4" FPT	7-11/32"	3-13/16"
29919304	1-1/2" FPT	9-9/32"	4-3/16"
29919305	1-1/2" FPT	12-9/32"	4-3/16"
29919306	1-1/2" FPT	9-9/32"	5"
29919307	2" FPT	12-11/32"	5"
29919308	2-1/2" FPT	12-23/32"	5-3/4"
29919309	3" FPT	12-23/32"	6-15/16"



Air Intake Filters



29933601

Powder Loader Filters

Part Number	Description	Length	OD
29934001	Cartridge Filter Assembly	23.438"	5.709"
29933601	Cartridge Filter	23.438"	5.709"

Note: 29934001 Assembly includes internal pulse jet deflector and support cage.



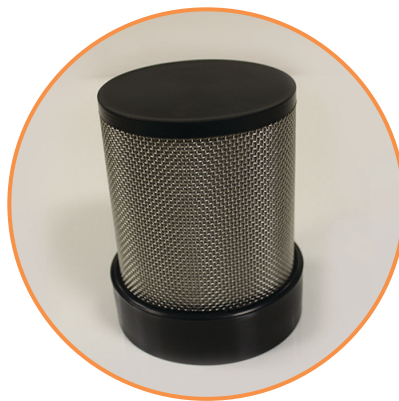
29934001

Tube Loader Filters

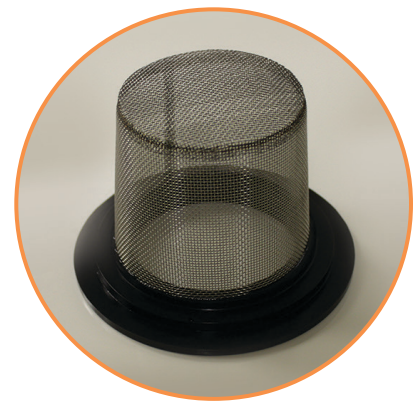
Part Number	Description
10552512	Filter, Pleated TLM
1055251201	Filter, TLA 20 Mesh / 200 Mesh Inside
1055251202	Filter, TLR 20 Mesh Inside and Outside
1055251203	20 Micron, No Pleat Filter. TLM Domed
1055251204	Filter, TLR, 10 Mesh
1055251205	Filter, TLR, CD, 20 Mesh



10552512



1055251201



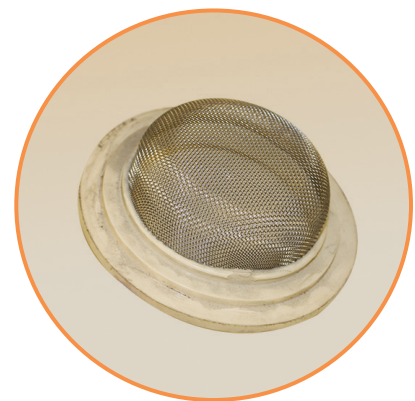
1055251202



1055251203



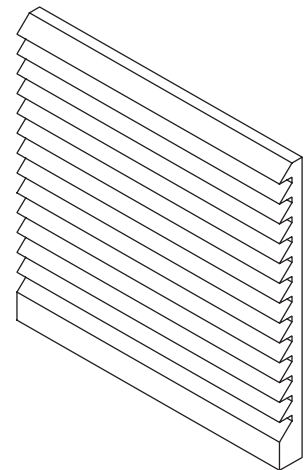
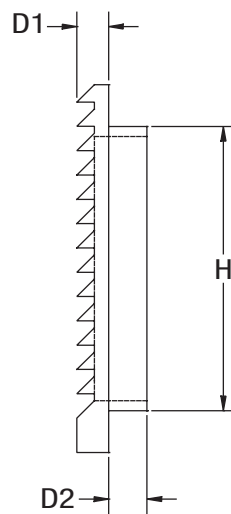
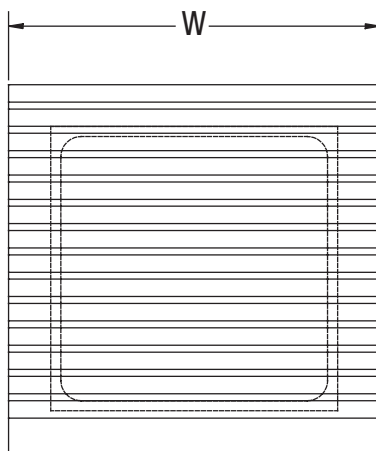
1055251204



1055251205

Enclosure Filter Kit

Part Number	Width	Height	D1	D2	Cut Out
26688601	4.59"	3.54"	0.39"	0.47"	3.63"
26688603	4" Replacement Filter (foam only) for 26688601				



Regeneration Filter with Foam

Part Number	OD	ID	Length
26688105	6.00"	2.50"	5.63"
VPPF18	Replacement Foam for Filter 26688105		



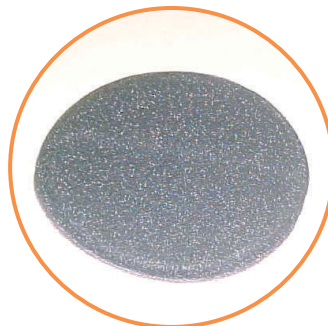
26688105

Miscellaneous Filters

Part Number	Size (OD)	Description
10124601	15-1/2"	<u>Old Style:</u> Dacron with 20 mesh screen and yellow gum seal. <u>New Style:</u> Dacron with expanded metal and black seal (direct replacement for old style).
102001	11"	Dacron w/internal Support Ring and blowback hole, used on older 12" Flex Throat Loaders, Selectronic and Integral Motor.
102002	14"	Dacron w/internal support ring and blowback hole, used on older 15" Flex Throat Loaders, Selectronic and Integral Motor.
102053	11"	Dacron w/internal support ring and foam backing.
102054	15"	Dacron w/internal support ring and foam backing.
102148	11"	200 Mesh stainless steel w/internal support ring, Dacron backing and blowback hole.
102149	14"	200 Mesh stainless steel w/internal support ring, Dacron backing and blowback hole.



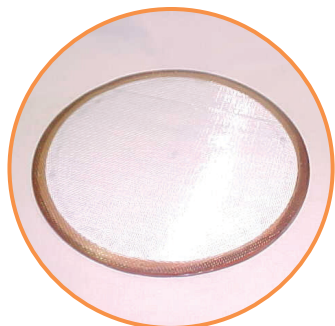
102001 / 102002



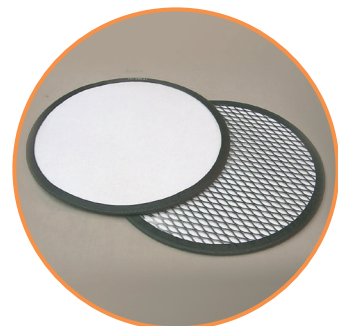
102053 / 102054



102148 / 102149



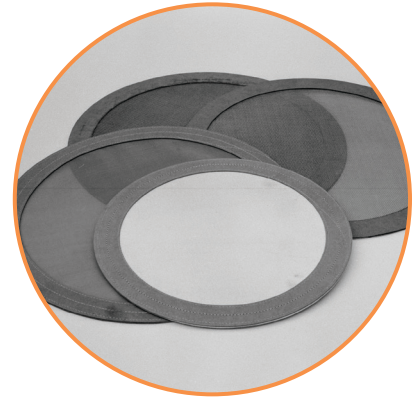
10124601 - Old Style



10124601 - New Style

Flex Filters

Size (OD)	Dacron	20 Mesh Stainless Steel	100 Mesh Stainless Steel*	200 Mesh Stainless Steel	200 Mesh Stainless Steel*
12-1/2"	10113304	10120104	10141604	10120204	10146404
15-1/2"	10113302	10120102	10141602	10120202	10146402
19-3/4"	10113301	10120101	10141601	10120201	10146401
24-1/4"	N/A	10120103	10141603	N/A	10146403
24-3/4"	10113303	N/A	N/A	10120203	N/A



Flex Filters

*These filters have a metal mesh support backing.

Air Line Filters

Part Number	NPT	OD x Length
24300501	3/8"	2-5/8" x 5-1/4"
24300502	1/4"	1-1/2" x 3-7/8"
24300601	3/8"	1-7/8" x 3-7/8"



Air Line Filters



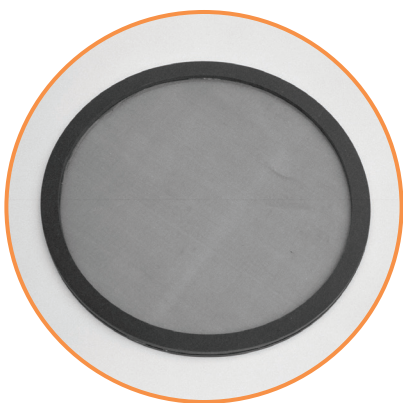
2669730104

SlimLine Filter Element

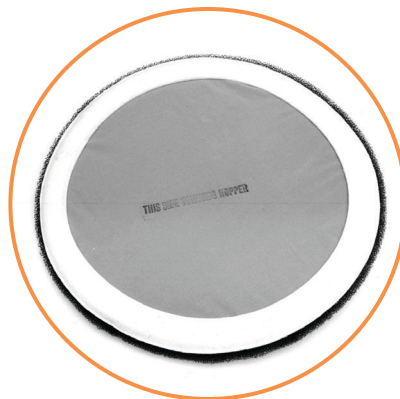
Part Number	Description
2669730104	Filter Element

Filters for 300 and 600 Autocolors

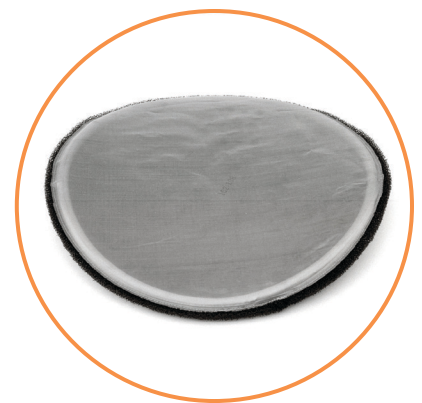
Part Number	Size	Model	Material
10397601	10-3/4"	300	Protective Screen
10245301	11"	300	20 Mesh Stainless Steel
10245303	11"	300	100 Mesh Stainless Steel
102551	11"	300	100 Mesh Stainless Steel & Polyurethane Foam
102107	11"	300	200 Mesh Stainless Steel & Polyurethane Foam
101434	11"	300	389.6 Mesh Nylon
10397602	13-3/4"	600	Protective Screen
10245302	14"	600	20 Mesh Stainless Steel
10245304	14"	600	100 Mesh Stainless Steel
102552	14"	600	100 Mesh Stainless Steel & Polyurethane Foam
102108	14"	600	200 Mesh Stainless Steel & Polyurethane Foam
101435	14"	600	389.6 Mesh Nylon



10245301



101434 / 101435



102107 / 102108

Muffler Filters

Part Number	NPT
19901501	1/8"
19901502	1/4"
19901503	3/8"
19901504	1/2"
19901505	3/4"
19901506	1"
19901507	1-1/4"
19901508	1-1/2"
19901509	1/8" Breather Vent



Muffler Filter

The muffler filter is ideal for sound deadening in cylinders, air impact wrenches, air motors and other tools. It is made of brass with 40 micron bronze filter elements. It can be used on air, oil or gasoline systems. It also prevents contaminants from being drawn back into components.

Filter Bags

Part Number	Size	Fits over Tube Size	Type
18900605	4-1/4" x 13"	2-1/2" OD	A
18900601	8" x 13"	3" OD	A
18900602	12" x 18"	4" & 5" OD	A
18900603	12" x 24"	6" OD	A
183845	14" x 9-9/16"	N/A	B
183842	16" x 12-11/16"	N/A	C
18900604	16" x 48"	8" OD	A
18900606	19-1/4" x 48"	12" OD	A
18550003	15-27/32" x 27"	N/A	D



Filter Bag

Type A: Used on drying hopper exhaust tube when used with hot air dryers.

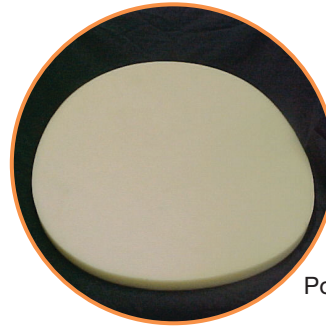
Type B: Secondary filter bag used with aftercooler - dryer to have 3" and smaller return line.

Type C: Secondary filter bag used with aftercooler - dryer to have 5" return line.

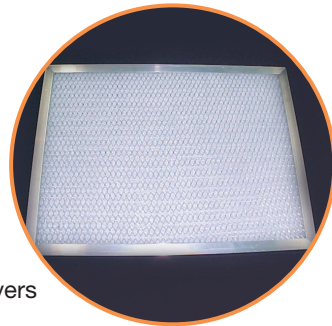
Type D: Secondary filter bag used with aftercooler - dryer to have 8" return line.

Polyurethane Foam Filters

Part Number	Size	Thickness
10384201	20"	3/4"
102045	25"	3/4"



Polyurethane Foam Filter



Air Filter for Hot Air Dryers

Air Filters for Hot Air Dryers

Part Number	Size
29901301	20" x 20" x 1"
29901302	15" x 20" x 1"

Clamp-on Air Filters

(Round Straight)

Part Number	ID	OD	Length	Clamp on Type/ Yes or No
29926701	1-1/4"	3"	4"	Yes
29926702	1-1/2"	3"	4"	Yes
29926703	1-3/4"	3-1/2"	5"	Yes
29926704	2-1/16"	3-1/2"	4"	Yes
29926705	2-1/4"	3-1/2"	6"	Yes
29926706	2-1/2"	3-1/2"	4"	Yes
29926707	2-3/4"	4-1/2"	5"	Yes
29926708	1-1/6"	3"	3"	Yes
29926709	3"	5"	5"	Yes
29926710	4"	5-5/8"	5"	Yes
29926711	1"	2"	1-1/2"	Yes
29926712	1-3/4"	3"	2-1/2"	Yes
29926713	1-3/4"	3"	2-1/2"	No
29926714	3"	4"	3-1/4"	No



Clamp-on Air Filters