

Parts Identification Guide
PID015/0506

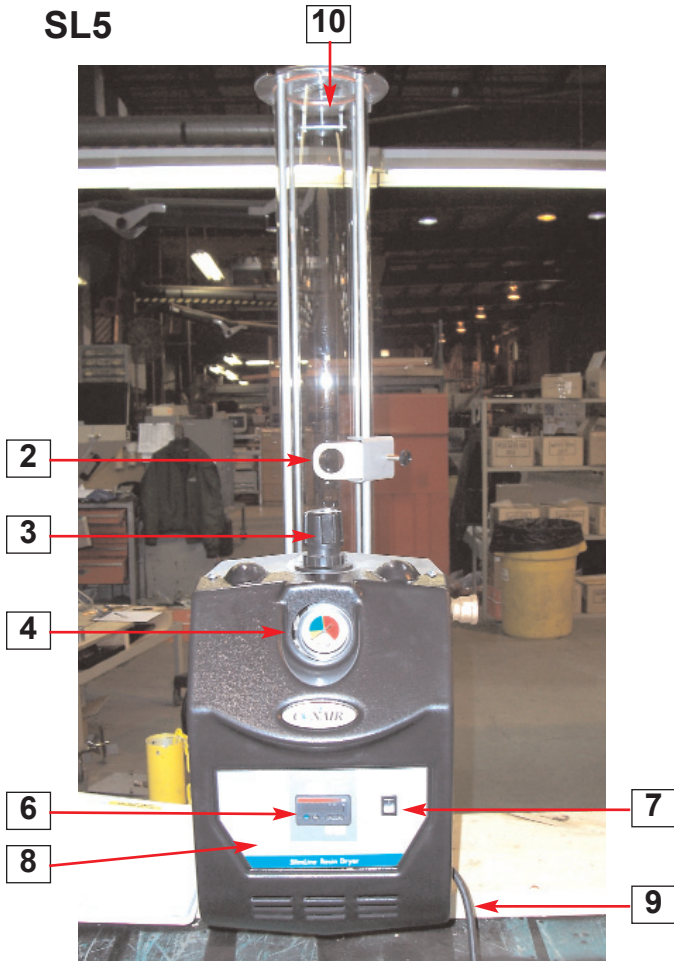
SlimLine™

Compressed Air Dryers

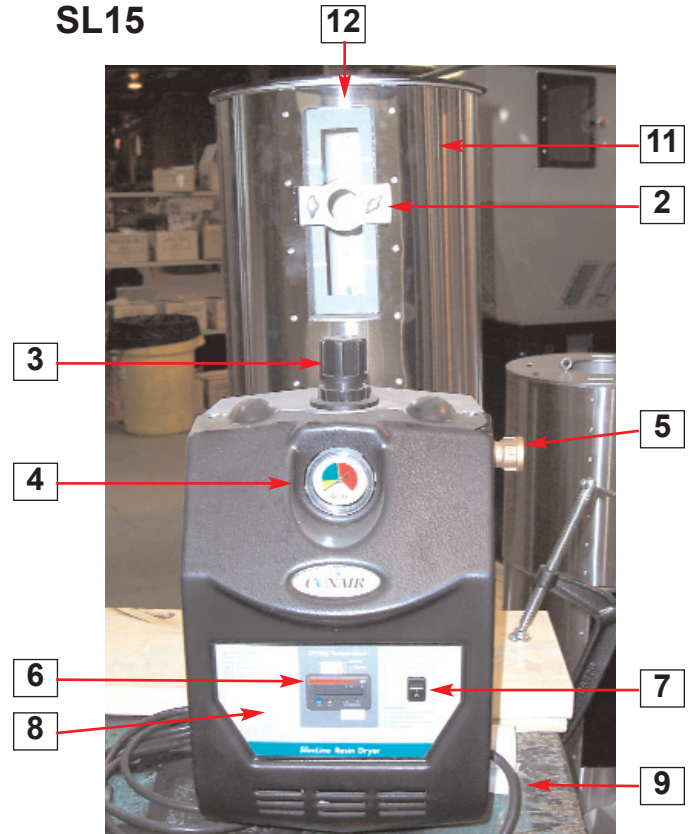
Models 2.5, 5, 15, 25 and 50



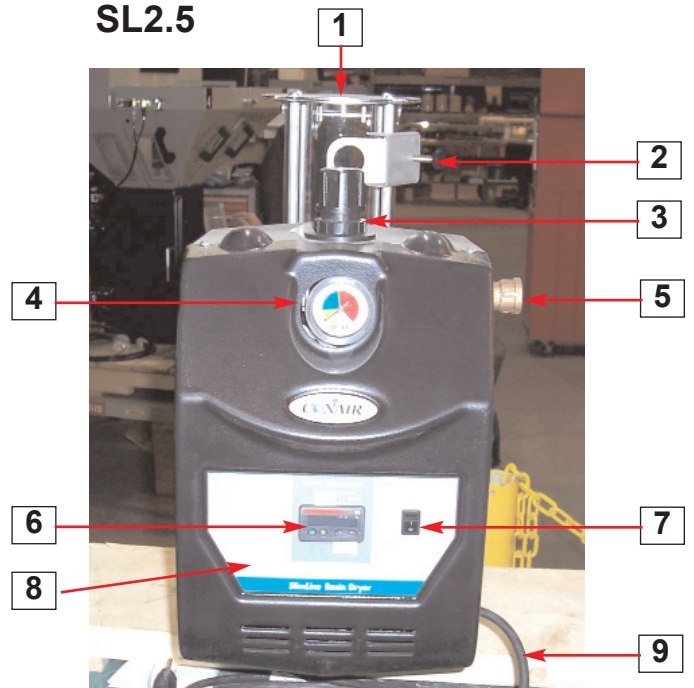
SL5



SL15



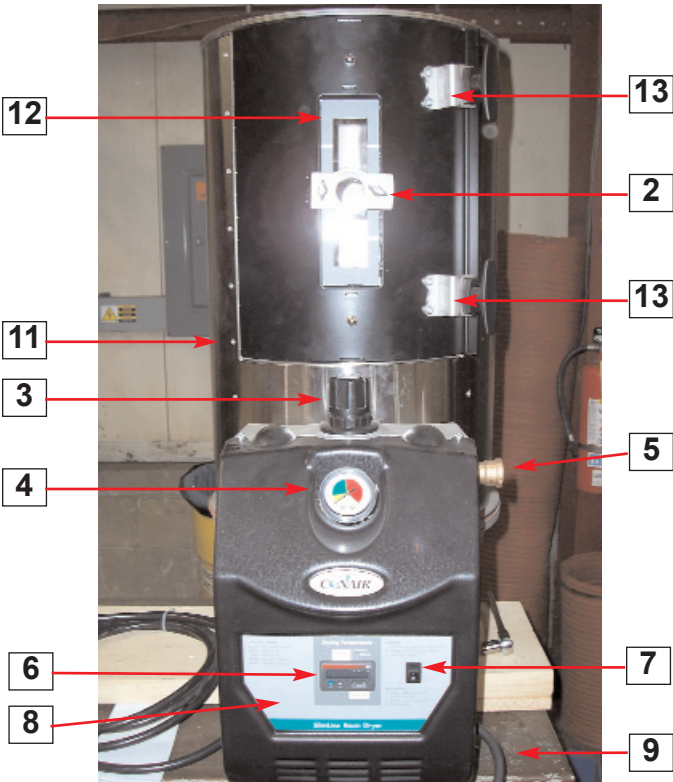
SL2.5



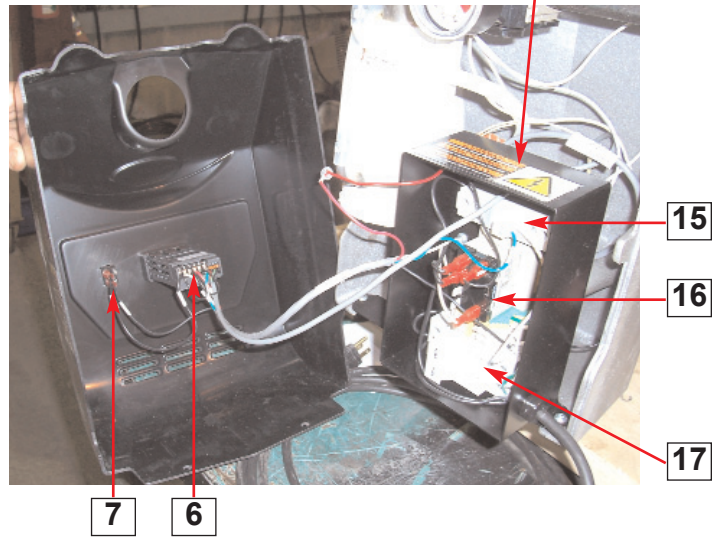
**SlimLine
Compressed Air Dryer**

- 1. 2.5 lb. Glass Tube
- 2. Sensor Bracket
- 3. Air Regulator
- 4. Air Gauge
- 5. Compressed Air Inlet
- 6. Temperature Control
- 7. On / Off Rocker Switch
- 8. Display Label
- 9. Power Cord
- 10. 5 lb. Sight Glass
- 11. Material Hopper
- 12. Hopper Door Sight Glass

SL25

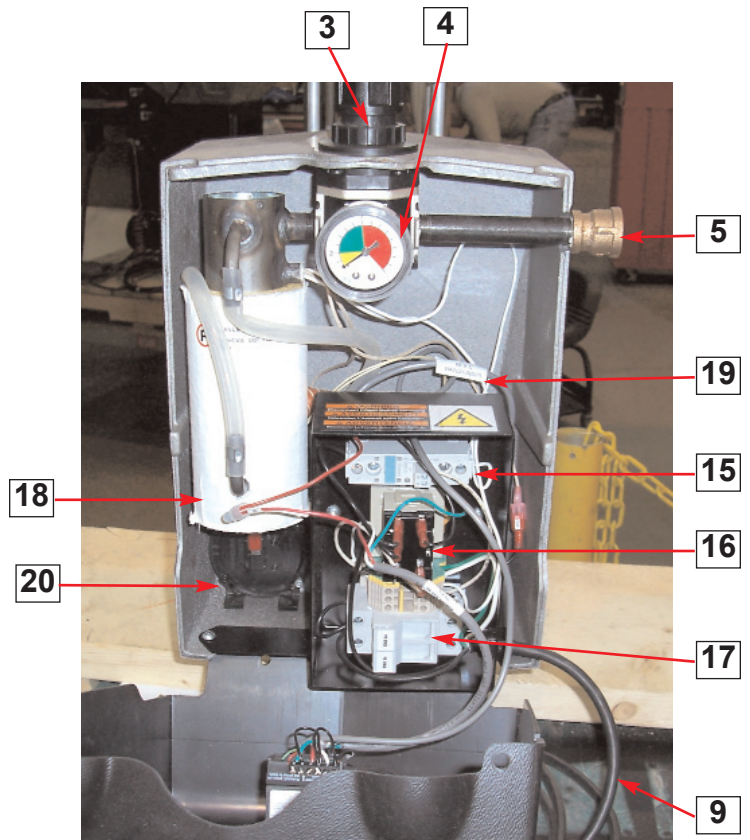


SL2.5, 5, 15, 25 Control



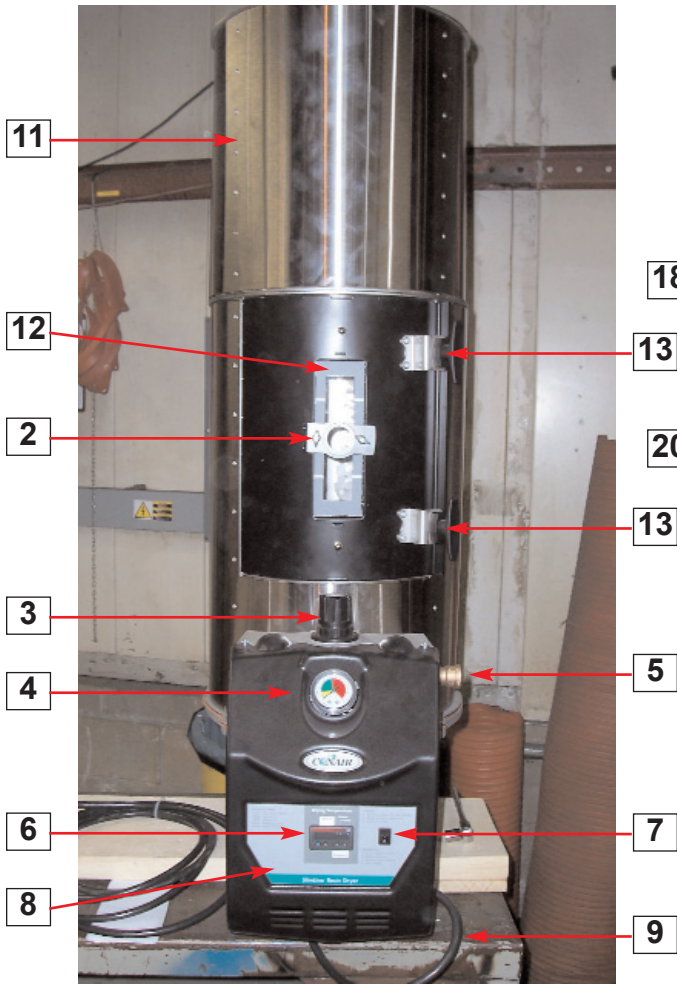
**SlimLine
Compressed Air Dryer**

- 2. Sensor Bracket
- 3. Air Regulator
- 4. Air Gauge
- 5. Compressed Air Inlet
- 6. Temperature Control
- 7. On / Off Rocker Switch
- 8. Display Label
- 9. Power Cord
- 11. Material Hopper
- 12. Hopper Door Sight Glass
- 13. Door Latch

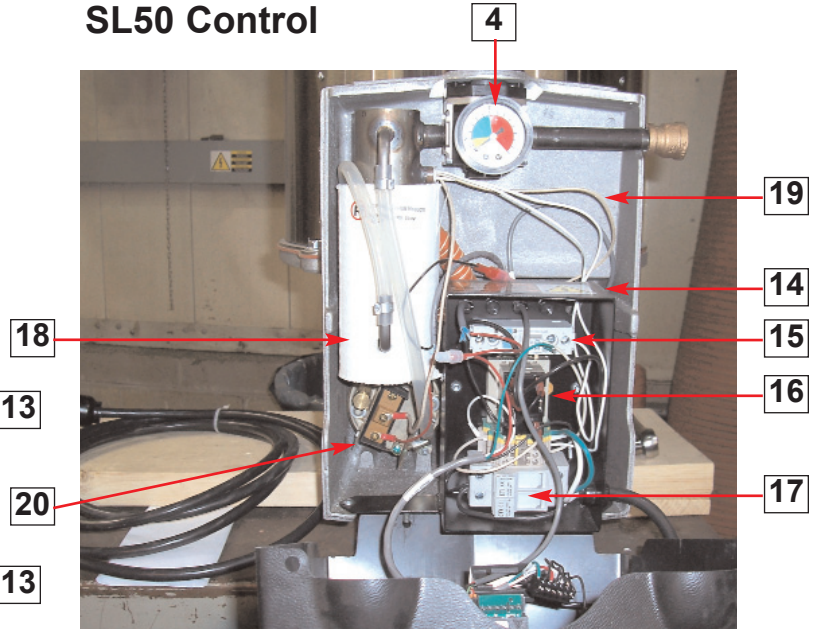


- 14. Control Box
- 15. Solid State Relay
- 16. Control Relay
- 17. Fuses
- 18. Heater Tube
- 19. RTD Cable
- 20. Pressure Switch

SL50



SL50 Control



**SlimLine
Compressed Air Dryer**

- 2. Sensor Bracket
- 3. Air Regulator
- 4. Air Gauge
- 5. Compressed Air Inlet
- 6. Temperature Control
- 7. On / Off Rocker Switch
- 8. Display Label
- 9. Power Cord
- 11. Material Hopper
- 12. Hopper Door Sight Glass
- 13. Door Latch
- 14. Control Box
- 15. Solid State Relay
- 16. Control Relay
- 17. Fuses
- 18. Heater Tube
- 19. RTD Cable
- 20. Pressure Switch