

Remote, Precise, Extended Extrusion System Control

The TrueWeight™ Line Manager allows extrusion processors to put their equipment on “cruise control”. It tracks material being fed to the extruder and automatically adjusts screw rpm and the haul-off device to maintain a consistent product output regardless of changes in raw materials, ambient conditions or processing variables.

The TrueWeight™ Line Manager has expanded features to control up to 12 extruders, including blenders and haul-off. The expanded functionality suits both mono-layer and co-extrusion applications in film, sheet, coating, pipe, profile, tubing and wire & cable extrusion.



15-inch TrueWeigh Line Manager

Centrally Coordinate Pullers and Blenders

Varying process conditions, backpressure, material bulk density, and even operator skill sets can cut extruder productivity. The TrueWeigh system gives processors complete visibility and control over throughput and finished product dimensions.

TrueWeigh coordinates operation of up to twelve (12) extruders, governing dimensions, relative weight of different layers, and total throughput. The Line Manager can coordinate with pullers and blenders installed in a line, and output data in SQL format for use with Conair's SQL reporting software.

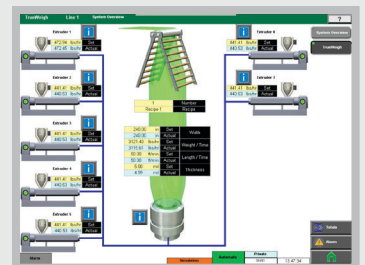
The TrueWeigh Line Manager's control of extruder output and weight per length helps maintain consistent rate and product thickness. Product quality can be improved with precise layer-ratio control in co-extruded film or sheet, and through better dimensional stability in tubing, pipe and profile wall thickness.

▶ Tighter extrusion and transitions reduce scrap

TrueWeigh allows processors to run products at minimum thickness (+/- 0.5% of set point). Extruder(s) synchronize with haul-off, optimizing stability and creating less scrap. Extruders and haul-off drives can ramp synchronously, so starting up and transitioning between line settings happens smoothly and stays on-spec.

▶ Larger screen streamlines control

The new, larger TrueWeigh touch screen can control more parts of your line - you can ramp up to 12 connected extruders in unison, along with pullers or haul-off, synchronized or at independent rates. Even blenders in the line can be adjusted from the large, comprehensive touch screen menus.

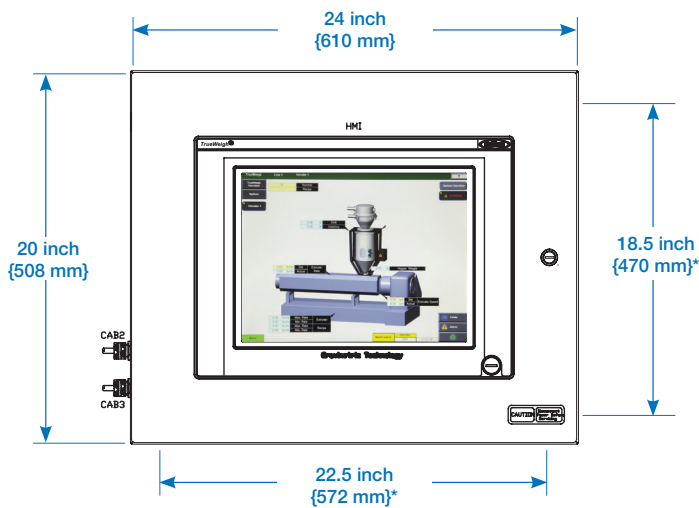


▶ Simplify set-up and reporting

User-friendly screens are configurable to match each specific extrusion process type. The operator can monitor the extrusion control set points, the haul-off control data, current and past alarm status and complete management of material inventory data. Additionally, extensive data from connected blenders can be output in SQL format, for use with Conair's SQL reporting software.



Specifications



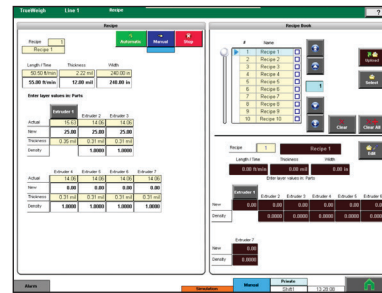
TrueWeigh Line Manager Remote Touch Screen

Unit has a depth of 8 inches {203 mm}

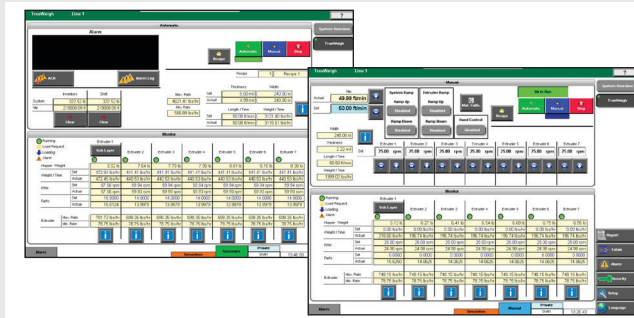
Specification Notes

Specifications may change without notice. Please consult a Conair representative for the most current information.

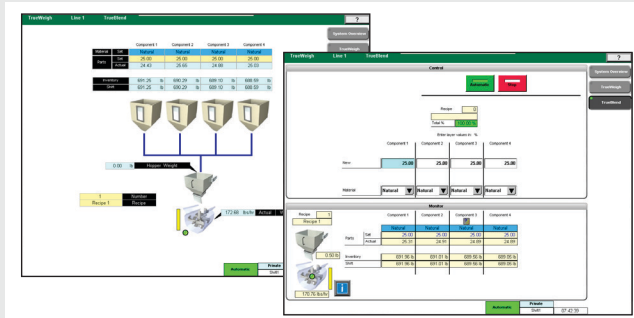
* Smaller dimensions denote space between mounting slots.



Centrally and automatically control the rates and proportions of all ingredients, extruders and pullers. Adjust for weight per length, cross-sectional accuracy, maximum yield, and more for targeted, scrap-free results.



Icon-driven operational sets for film, profile, sheet, and more on a 15-inch full color screen enable faster start-up, speed ramping, streamlined monitoring, and dynamic changes.



The TrueWeigh Line Manager provides menus for individual blenders and the individual ingredients of each, and allows you to centrally set and change recipes.

Features

- 15-inch touch-screen HMI with PLC based controls
- Monitor one to twelve extruders and one haul-off
- Recipe book (stores 1,000 recipes and 250 resins)
- Trending, diagnostics, alarms and built-in help screens
- USB output to flash drive
- Reports (inventory, alarm and status)
- Virtual Network Client (VNC) Viewer
- Selectable languages: English, Spanish, German and Chinese. Other languages available upon request.

Options

- Extruder drive control
- Ramp drives simultaneously or independently
- Haul-off pulse encoder and drive control
- Audible/visual alarm
- Selectable remote communications protocols (OPC, Modbus TCP, Ethernet IP)
- Bumpless transfer
- SQL Data Output

