

Compact Receivers For Pellets and Regrind

The compact TLR model Tube Loader provides trouble-free material transfer within a central vacuum system. The exclusive, 4.5-inch diameter tube body means that materials will always flow easily from the receiver without bridging. The hinged lid is equipped with a compact vacuum sequencing valve and allows easy, no-tools servicing of the oversized, drop-in, 20 mesh stainless steel filter.

Any TLR may be easily equipped for ratio loading of two materials by the simple addition of a compact ratio valve on the material inlet tube.



TLR Direct Feed
with UTB

TLR Hopper Loader
with optional ELC-16 control

Modular, Economical, All-Stainless Receivers

The TLR is available in two configurations. The hopper loading version fits directly on top of a bin or drying hopper, or any other type of vessel. Its wide discharge valve incorporates a demand switch allowing the TLR to automatically keep the receiving bin full (also available with a remote demand sensor).

The direct feed version is equipped with a 1 or 2 lb. glass hopper and couples easily to your processing machine throat. If the machine throat is not vacuum-tight an optional isolator valve may be added. The demand sensor may be shot-size adjusted up and down the glass hopper.

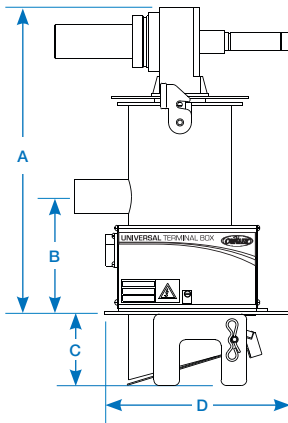
The drop-in screen filter module provides more than 40 square inches of 20 mesh filter area for efficient air/material separation.

- ▶ **Modular, easy cleaning**
All chambers come apart without tools for easy access, material changes and cleaning.
- ▶ **Compact, attractive**
The 4.5-inch diameter receiver sports an electro-polished stainless steel finish that will compliment any facility while requiring almost no maintenance.
- ▶ **Versatile use**
Available in both hopper loading and direct throat feeding versions, the TLR may also be equipped with compact ratio valve.
- ▶ **Easy-access hinged lid**
No-tools, swing clip opens easily for maintenance.
- ▶ **Choice of control**
The Universal Terminal Box (UTB) is mounted on your receiver. The UTB works with FLX-128 Plus. The optional ELC control is a stand-alone loading control based on a receiver integrated CAN open network.

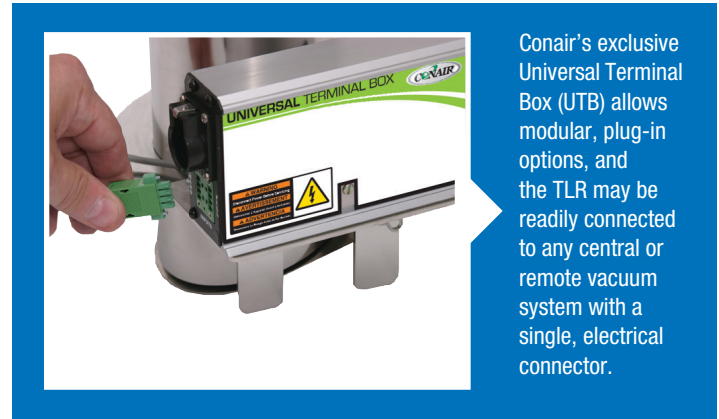
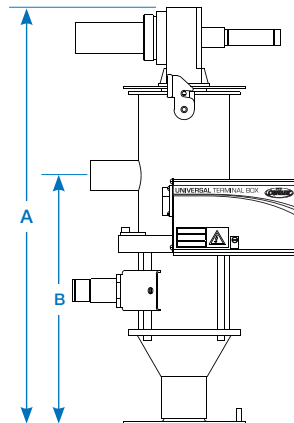


Specifications

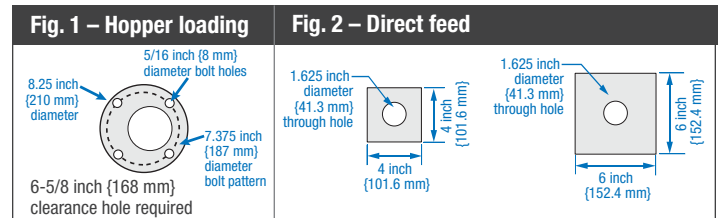
Hopper loading



Direct feed

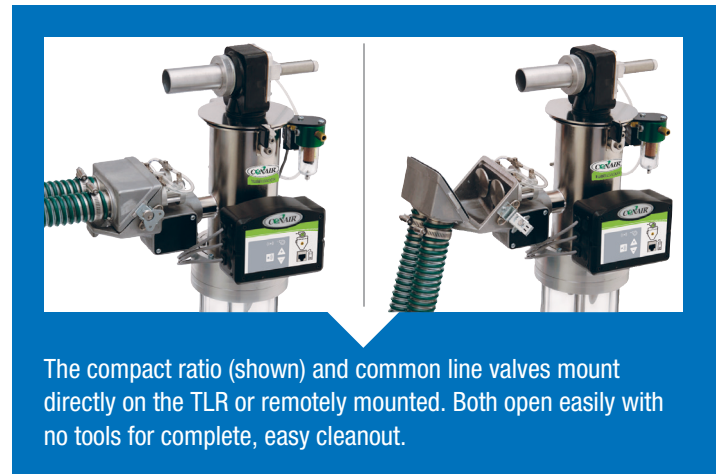


Loader model	TLR
Loader diameter inches {mm}	4.5 {114}
Loader volume ft ³ {liters}	0.1 {4.0}
Material line size inches {mm} OD	1.5 {38.1}
Vacuum line size inches {mm} OD	1.5 - 2.0 {38.1 - 50.8}
Available voltages, 50/60 Hz	120/24 VAC/24VDC
Compressed air requirements	90 maximum psi, 1.4 CFM
Loader maximum temperature rating °F {°C}	180 {82}
NPT fitting	1/4 inch
Filter area in ² {cm ² }	36.0 {232.3}
Filter type	20 mesh stainless steel



Hopper Loading Model

Loader Model	TLR
Dimensions inches {mm}	
A - Height above mounting plate	13.5 {343}
B - Height to center of material inlet	5.0 {127}
C - Depth below mounting plate	4.0 {102}
D - Clearance hole diameter	6-5/8 {168}
Mounting details	See Fig. 1
Approximate weight lb {kg}	
Installed	12 {5.4}
Shipping	24 {10.9}



Direct Feed Model (Glass Hopper)

Loader Model	TLR	
Viewing chamber model	1 lb	2 lb
Viewing chamber capacity lb {kg}	1 {0.45}	2 {0.91}
Dimensions inches {mm}		
A - Height above mounting plate	20.5 {521}	25.75 {654}
B - Height to center of material inlet	12.25 {311}	17.50 {445}
Mounting details	See Fig. 2	
Approximate weight lb {kg}		
Installed	15 {6.8}	17 {7.7}
Shipping	24 {10.9}	26 {11.8}



Specification Notes

* The optional isolator valve adds 1.625 inches {41.3 mm} to the height.
 Specifications may change without notice. Consult with a Conair representative for the most current information.

