

## Running the TrueBlend -Report computer software

### Printing Online

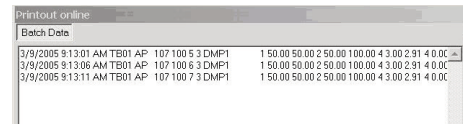
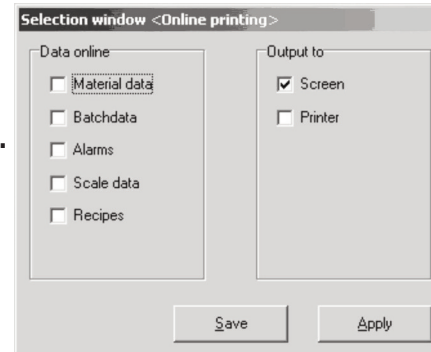
Settings for direct output of messages on screen and/or printer can be made with this function.

- 1 Select "Settings/Print online".
- 2 Select the checkbox for the desired actions and accept them with "Apply" or "Save". "Save" saves the specified values to the configuration file. The output to screen is the default setting.

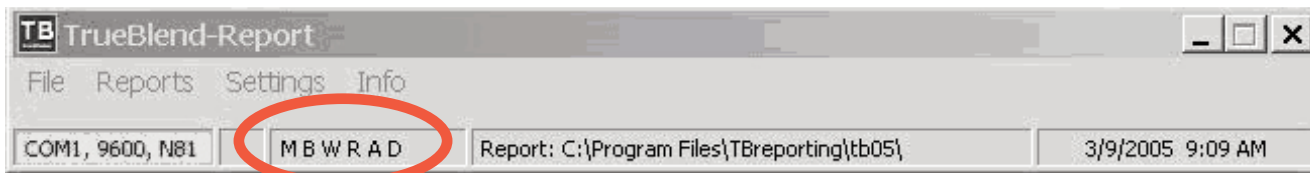
>>> **NOTE:** If only one message is read, it is displayed in a new window on receipt. The window is moved to the foreground with every message, because only the last 15 messages are displayed.

- 3 Press the buttons on the top edge of the screen for other selected message.

>>> **NOTE:** If the print checkbox is active, a print job is generated at the same time as the messages are written. They are only printed out if one page is filled or the job is terminated by closing the window. The print button at the bottom of the screen operates independently to this and generates a printout of the currently available messages (maximum 15) in all active windows. If both print modes are used simultaneously, print errors may occur in some circumstances.



The status of the online checkboxes are shown in the status line. A displayed letter represents the "Enabled" function. M=Material data; B=Batch data; W=Scale data; R=Recipes; and A=Alarms.

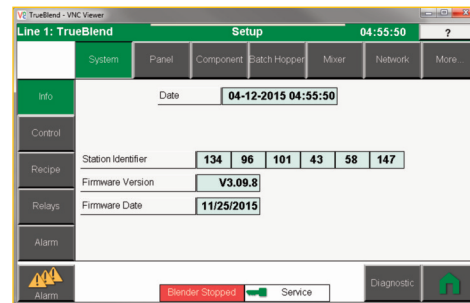


### System Information

The software status of the TrueBlend and the firmware status of the touch panel can be read in the system information.

- 1 View the software status, the version, and the date for service or parts information.

- Firmware Version: Firmware version of the touch panel.
- Firmware Date: Creation date of the firmware.



**WARNING:** This card provides only basic troubleshooting and maintenance information. Users must be familiar with all safety information and procedures described in the TrueBlend User Guide.

## Operation & Setup

Quick Card

OCB013-0716

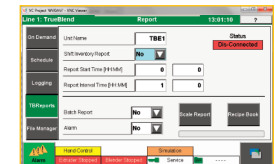
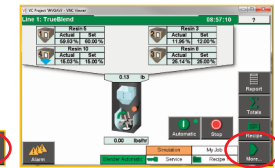
# TrueBlend Gravimetric Blender SB-3 Control



## Creating reports

Reports for batches, shifts, recipes, and scales.

- 1 From the Home screen, the TrueBlend status is shown.
- 2 Press the Report button to open the Report screen.
- 3 Press the TBReports button.



>>> **NOTE:** The report position is started daily at the specified start time and after expiry of the interval time.



Corporate Office: 724.584.5500  
Instant Access 24/7 (Parts and Service): 800.458.1960  
International: 814.437.6861 • www.conairgroup.com

# Report Generator – TrueBlend reports

The messages from the TrueBlend controller are sent through the message capture and report program “TB\_Reports” to a computer. Data is output through the touchscreen Ethernet port. (Cable connection to the appropriate computer is required.)

The transmitted message types are:

- Material data (shift report)
- Alarm messages
- Recipe data
- Batch data
- Scale data

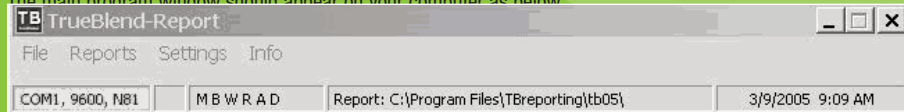
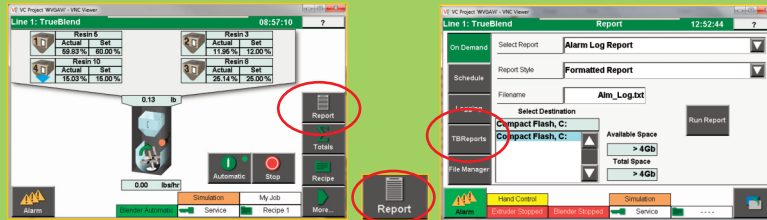
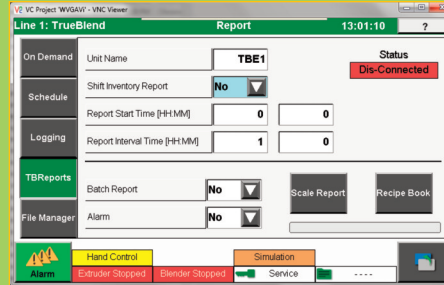
To utilize the TrueBlend reporting capabilities:

- 1 From the Home screen, press Reports.
- 2 From the Reports screen, press TB Reports.

Reports can be created from the data filtered by data, time and unit or IP address. The reports can be displayed on screen and printed. It is also possible to save the message files in “.csv” format and read and edit them in spreadsheet programs such as Microsoft Excel®. The TB\_Report software package is available from Conair.

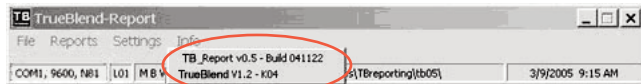
After starting the program the incoming messages are immediately received and saved as a “\*.rpt” file if the interface is connected and configured correctly.

The main program window should appear on your computer as below:



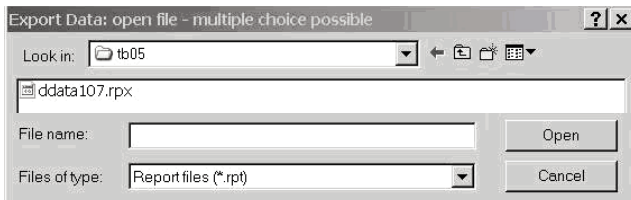
## Version

- 1 Select the “Info” menu. The current version and the build date are displayed.



## Converting Data

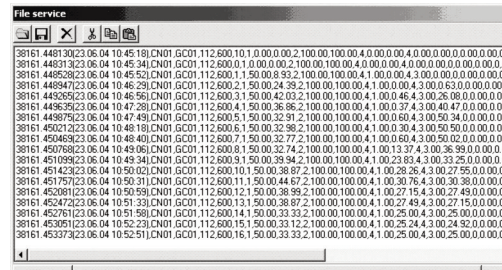
- 1 Select “File/Export data” to open the selection dialog and select the message files that you want to convert.
- 2 Select “Open” to start the export and save the file in “.csv” format.



## Maintaining Files

- 1 Select “File/File Service” to open the maintenance window.
- 2 Highlight the position you want to edit and carry out the corresponding action with the icons.

The position of the cursor (row= Z; column= S) is shown in the bottom left of the field below the file name of the open file.



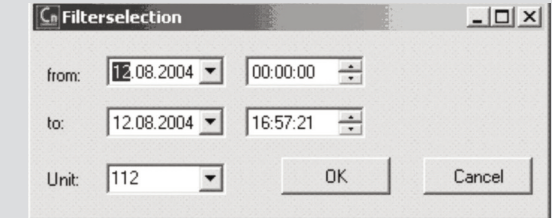
## Back Up Files

- 1 Select “File/Backup files” and select the directory to which all message files (\*.rpt) will be copied.

# Creating Reports

The “Reports” menu item enables the data of the various message types to be collected.

- 1 Select the desired message type in the menu.
- 2 Input the time/date range and the unit number in the filter dialog.
- 3 Click “OK” to create the report and display it on the screen, or click “Cancel” to stop the report creation.



# Making Settings

The program settings for the directories used, the serial port (ComPort), language, and printer can be selected in the settings menu.

- 1 Select the directory where the message files will be saved in the dialog.
- 2 Select the desired ComPort settings in the dialog.
- 3 Set the operating language.
- 4 Select the printer.

>>> TIP: Conair UDP refers to network settings that do not currently exist.

>>> NOTE: The directories and ComPort settings are stored in the configuration file and are available the next time the program is started.

>>> NOTE: Changes of language and printer remain in effect until the program is closed or until the next change. They do not change system settings.

The TB Report Software Package is available from Conair. Contact Conair Sales: 1.800.654.6661 From outside of the United States, call: 724.584.5500 or fax: 724.584.5299, email: info@conairgroup.com www.conairgroup.com