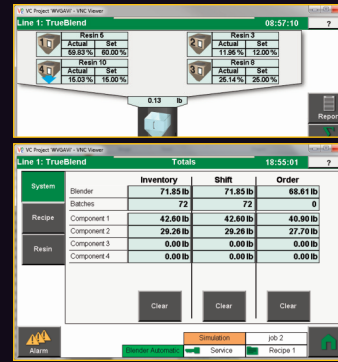


TrueBlend Component Setup

The material component values for a batch are entered as percentages. The “TrueBlend Home” and “TrueBlend Totals” screens show the various material hoppers with the factory material assignment.

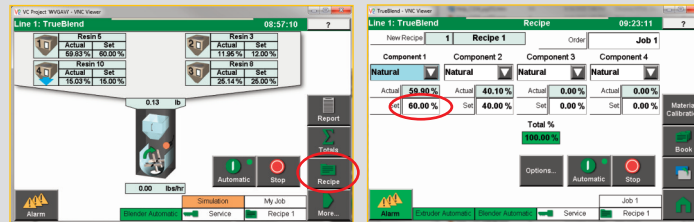
The material types in the hoppers can be changed. The outer number in the hoppers shows the set value for the batch in % (TrueBlend Status).

Press the Recipe button to make the following settings for all components:



Input Material Percentages

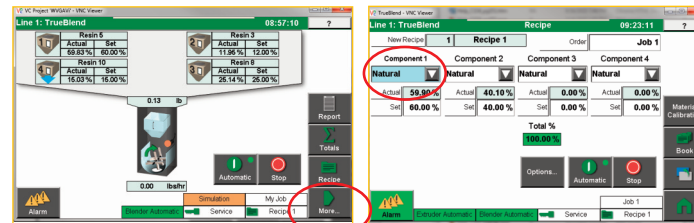
- 1 Press the Recipe button to input the percentage for each material component.
- 2 Input the value with the numeric keypad, on the “set” line.
- 3 Confirm the value with .



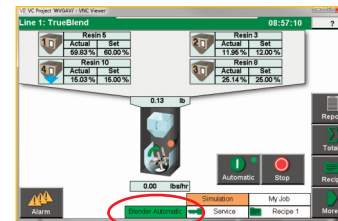
>>> **NOTE:** If using multiple naturals, they must equal 100%.

Input Material Type

- 1 Press the Recipe button to move to the Recipe screen.
- 2 Input the type of material in each supply hopper. If no material will be in this hopper, material type can be ignored.
- 3 Note that factory settings are as follows: position 1=Reg.; position 2=Nat.; position 3=AddN; position 4=AddN; position 5 (if applicable)=Off; position 6 (if applicable)=Off.



>>> **NOTE:** The status indicator will show the current state of the system. (Automatic, Stopped, Stopping) The batch will not dump until there is sufficient room in the weigh bin and the level sensor is exposed. A yellow bar on the screen next to the mixer indicates that the mixing chamber is full and that the weigh bin has no place to put the current batch until the material level in the mix chamber is lowered.



Operation & Setup

Quick Card

QCB010-0716

TrueBlend Gravimetric Blender SB-3 Control



Operation

To Start Blending

- 1 Turn on main power to the blender. Wait for the Home screen to be displayed.
- 2 Press the Automatic button to start the blending process automatically. The blender will use the last set of values or the factory settings. The button will now display a green dot.



To Stop Blending

- 1 Press Stop to stop metering the mixing process. The operator will be asked to stop immediately or wait to finish the batch. When stopped the button changes to display a red dot.



Corporate Office: 724.584.5500
Instant Access 24/7 (Parts and Service): 800.458.1960
International: 814.437.6861 • www.conairgroup.com

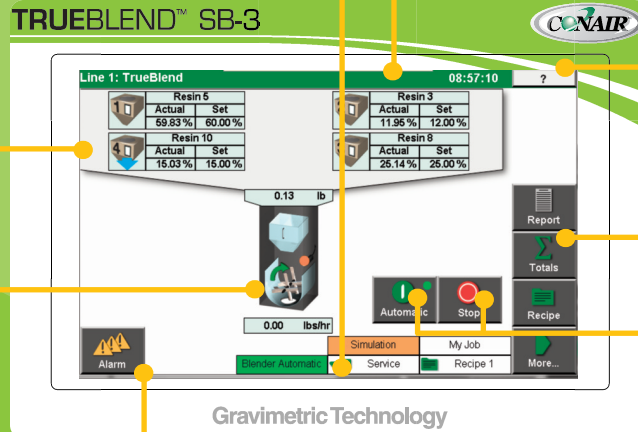
WARNING: This card provides only basic troubleshooting and maintenance information. Users must be familiar with all safety information and procedures described in the TrueBlend User Guide.

The TrueBlend control panel

Security Operating level

Touchscreen
Used to make selections, navigate through screens, view information, and enter settings.

Live action display
Displays what is currently happening with the blender. The mixing chamber visually displays mixing, dumping, and loading.



Control screen level
Indicates which screen is currently displayed.

Help screens

Home screen
Used as an overview of the blender's operation.

Navigation buttons
Includes the Settings, Help, Totals, Recipe, Alarm, Back, and Home buttons. These are used to navigate through the screens.

Automatic and Stop
Used to start and stop the blender.

Alarms
Shows an alarm status.

Using the keypad

When using the controller, at times you are prompted to input numbers or words. When a numeric or alphabetical keypad opens, you can make your inputs.



Explanation of additional screen icons

Alarm Display

In the event of an alarm, the Alarm button illuminates. The alarm priority can be set to specify how the unit behaves when an alarm occurs.



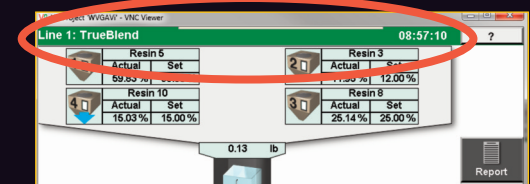
Operating Level

The operating level is shown at the bottom status area. There are four operating levels. The operating levels are guest, operator, setup, service



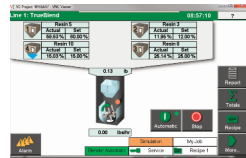
Time and station name display

The top bar of the screen shows the current time and the station names. (Blender ID) The time and station name can be set in the Setup screen.

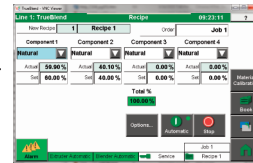


Navigating the controls

Home
Press this button to return to the home screen. This button is visible on all screens except Home.



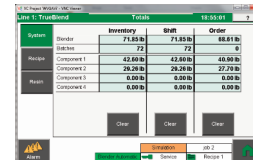
Blending Recipe Menu
Press this button to adjust or replace associated settings on the Recipe screen.



System Setup Menu
From the Home screen, press More then Setup to open a screen that enables access to various settings.



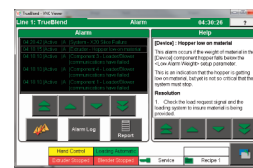
Totals Screen
The associated settings are called from the Loader status screen and all other loader screens.



Back Button
Press the back button on any screen to return to the previous screen.

Help Button
Press this button to find information on specific functions.

Alarm Overview Screen
In the event of an alarm message, press this button to gain direct access to the alarm overview.



WARNING: This card provides only basic troubleshooting and maintenance information. Users MUST be familiar with all safety information and procedures described in the TrueBlend User Guide.